

picklePATT™

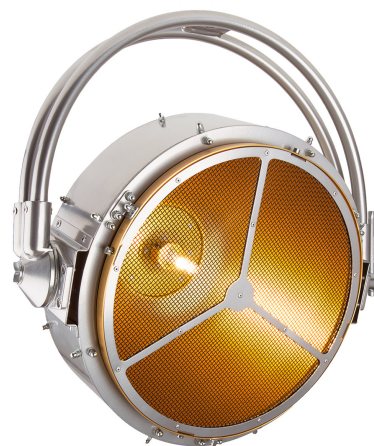
Following the series of retro style lighting, the picklePATT is the new cute compact addition to our tungsten classic family.

**Light source**

High Performance Tungsten Lamp 575 W

**Effects**

392 mm parabolic aluminium reflector with high reflectivity coating



It is the second fixture, made in collaboration with lighting designer Tim Routledge, which combines traditional aesthetics and modern build quality. The picklePATT is specifically designed to further the current trend for tungsten eye-candy on stage and set - for bands, television, film and general prop lighting, while keeping its vintage looks and utilizing the modern, readily available 575 W HPL lamp. The 575 W tungsten softlight is formed around a 392 mm sleek, spun parabolic aluminium body which maximizes its curves to look as good on stage as the performers it illuminates. The picklePATT proves that lighting fixtures can be more than just a practical necessity - the luminaires themselves can be a piece of art and create the mood. The well-known member of Robe's tungsten classic range - PATT 2013 - has already been used on television broadcasts and concerts worldwide including Jeff Lynne's ELO, Gary Barlow, The Prodigy, Robbie Williams, Paul McCartney, X Factor, Britain's Got Talent, The Graham Norton Show plus numerous other talk-show sets.

Technical Specification

Source

- Light source type: High Performance Tungsten Lamp
- Base: G 9,5 special (with heat sink)
- Recommended lamp type: HPL 575/240/X 575W - 240V, HPL 575/120/X 575W - 120V
- Lifetime: 1.500 hours
- Colour temperature: 3.050 K

Optical system

- 392mm parabolic aluminium reflector with high reflectivity coating

Control and programming

- External Dimmer

Thermal specification

- Maximum ambient temperature: 45 °C (113 °F)
- Maximum surface temperature: 160 °C (320 °F)

Electrical specification and connections

- Input voltage range: 120 V or 240 V, 50/60 Hz
- Power consumption: 575 W

Approvals

- CE Compliant
- cETLus Compliant

Mechanical specification

- Height: 520 mm (20.5")
- Width: 531 mm (20.9")
- Depth: 241 mm (9.5")
- Weight: 5.3 kg (11.7 lbs)
- Ingress protection rating: IP20

Rigging

- Mounting points: M12 mounting for clamp or spigot
- Universal operating position

Included items

- User Manual
- Power cord

Optional accessories

- Lamp HPL575 240V LL: 14080055
- Lamp HPL575 120V X: 14080056
- Dual Top Loader Case: 10120192
- Quad Top Loader Case: 10120191
- Floor stand: 10980259
- Tripod: 10980287
- Spigot: 10980260

Legal

- picklePATT™ is a Trademark of Robe lighting s. r. o.
- picklePATT™ is patented by Robe lighting s. r. o. and protected by one or more pending or issued patents